

User Manual



iGET Control Center

User Manual for configuration via PC

Designed for home and business security.
Easy to setup and use with **App iGET.**

World famous expert of smart-home alarm system

Perfectly match all Android and iOS smart phones.

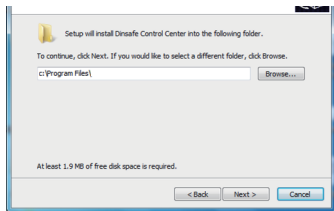
MENU

● Connect & Setup	P2
● Pairing and managing accessories	P3
● Normal Settings - Emergency Contact	P4
● Normal Settings - Clock and Other Settings	P5
● Advanced Settings	P6
● Check logs & events	P7
● Upgrade Firmware	P8

Connect & Setup

Download & Install iCC (iGET Control Center)

- Visit www.iget.eu to get the latest iCC.
- Please make sure your PC has installed .Net Framework 4 or later version.
- Double-click the downloaded executable file to start installation.
- During the installation, you would be asked to install a CH34X driver. Remember to install the driver because iCC could not connect to the main panel without this driver.



iGET Control Center

After installation, you
could find iCC's icon
on your desktop.

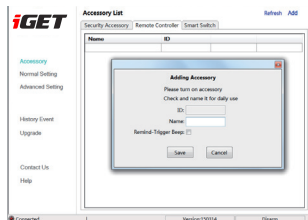
Connect your main panel to PC

- Open the back cover of main panel. Shut down the main panel.
- Use microUSB cable to connect your PC to the power interface of main panel.
- Power up main panel, launch iCC on your PC.

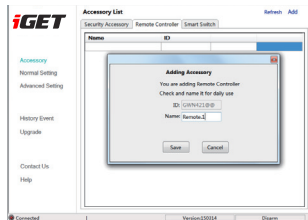
iCC (iGET Control Center) only works on Windows XP or later version. If you're using Windows XP, you might need to install .Net Framework 4 or later version.

Pairing and managing accessories

Pairing accessory by triggering

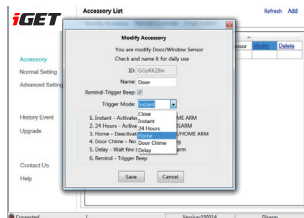


① In iCC - [Accessory], click [Add]. Main panel will monitor all signals triggered by accessory.



② Trigger one accessory each time, when the ID is recognized, rename your accessory and save.

Modify accessory setting

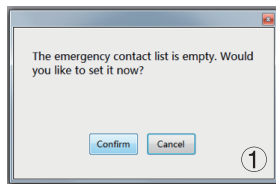


You can easily change the trigger modes of your accessories. Just click [Modify] and adjust one by one.

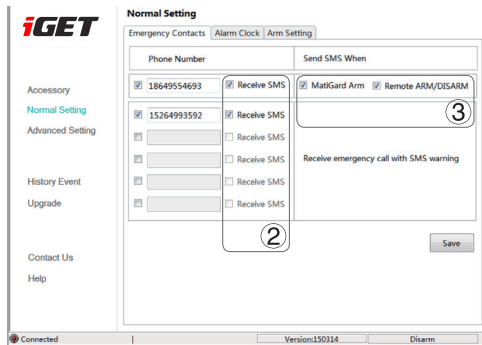
Smart Devices like IP camera or Smart Switch should be paired by app.

Normal Settings - Emergency Contact

Setup Emergency Contact



① If you haven't setup any emergency contact in main panel, iCC will guide you to set it.



② There are up to 6 emergency contacts could be set. All contacts will receive phone calls when alarm triggered, and only those checked the [Receive SMS] would receive alarm text message.

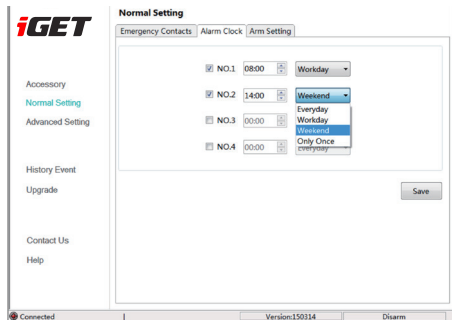
③ To save the SMS cost, only the first contact could receive arming notification from both main panel or remote controller.

Don't forget to click [Save] to apply setting.

Normal Settings - Clock and Other Settings

Setup Alarm Clock

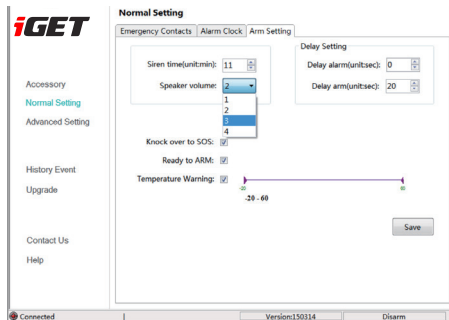
- There are 4 set of alarm clocks for setting.
- Each alarm clock has 4 modes. Here [Workday] means the alarm clock will be active from Mon. to Fri.



Arm Setting

You can do some arming related settings here.

- Adjust build-in siren time and the speaker volume.
- Adjust the time setting for delay alarm or delay arming.
- Turn on/off the new features like Knock over to SOS or Ready to ARM.
- Setup a safe temperature range for main panel, system will inform you when surrounding temperature exceeds the limit.



If the time on main panel is in error. Please use iGET SECURITY app to initialize it. The system time will be synchronized with your phone after initialization.

Advanced Settings

Arming/Disarming Schedule

- Up to 6 sets for automatically ARM/DISARM/HOME ARM.

Password Setting

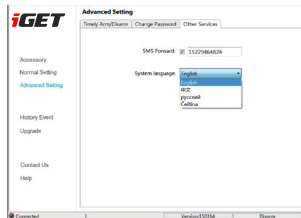
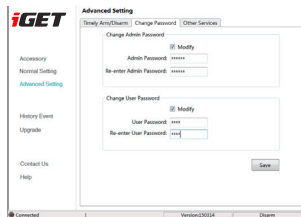
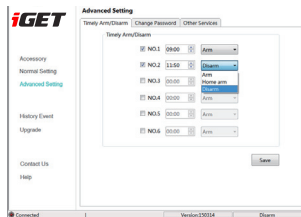
- Change the passwords for Administrator or Users.
- Once the password is modified, app users should redo the initialization process in **iGET SECURITY app** for continue using.

SMS Forward

- By tuning this feature on, **SECURITY M3** will forward SMS from the contact you filled here to the first emergency contact.

System Language


- **SECURITY M3** supports global languages, select language here to change the MENU and SMS's language.



Check logs & events

Check and view history events

- iCC would read all history events and sort them by time.



Accessory
Normal Setting
Advanced Setting

History Event
Upgrade

Contact Us
Help

History Event

Refresh

ID	Datetime	Event	Accessory ID	Accessory Name
1	01/01 00:14:38	Arm	GWN421@@	Remote.1
2	01/01 00:14:38	Disarm	GWN421@@	Remote.1
3	01/01 00:14:50	Home arm	GWN421@@	Remote.1
4	01/01 00:14:57	Wireless alarm	GGyKKZ8w	Door
5	01/01 00:15:04	Disarm	GWN421@@	Remote.1

Connected

Version:150314

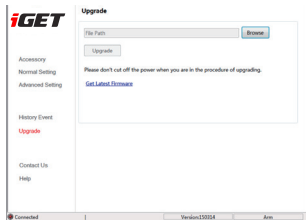
Disarm

Upgrade Firmware

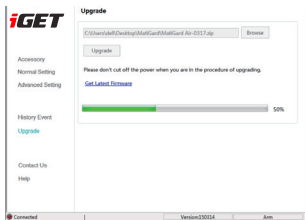
Get the latest firmware

- Visit www.iget.eu to get the latest Firmware. Please confirm the type of your main panel. There are different firmwares for SECURITY M3.
- The firmware is in ZIP file format, please do not uncompress it.

Use iCC to upgrade firmware

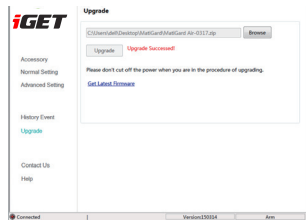


① In iCC - [Upgrade], click [Browse] to select the right firmware.



② Click [Upgrade] for updating, the process will last from 3 mins to 20 mins. Don't cut off main panel's power until you see the confirming notification!

Note! You can cut off alarm M3 from PC after you see "Upgrade success!" not earlier!!!



③ Now your **SECURITY M3** is up to date. Enjoy it!

*If there's any error occurs during the upgrade process, please re-upgrade again.
If it still fails, please contact your supplier for fast support.*



Available on the iPhone

App Store

<http://din.bz/iGetiOS>



ANDROID APP ON

Google play

<http://din.bz/iGetAndroid>

INTELEK spol. s r.o. 2015. All rights reserved.

Website : www.iget.eu E-mail : sales@iget.eu

